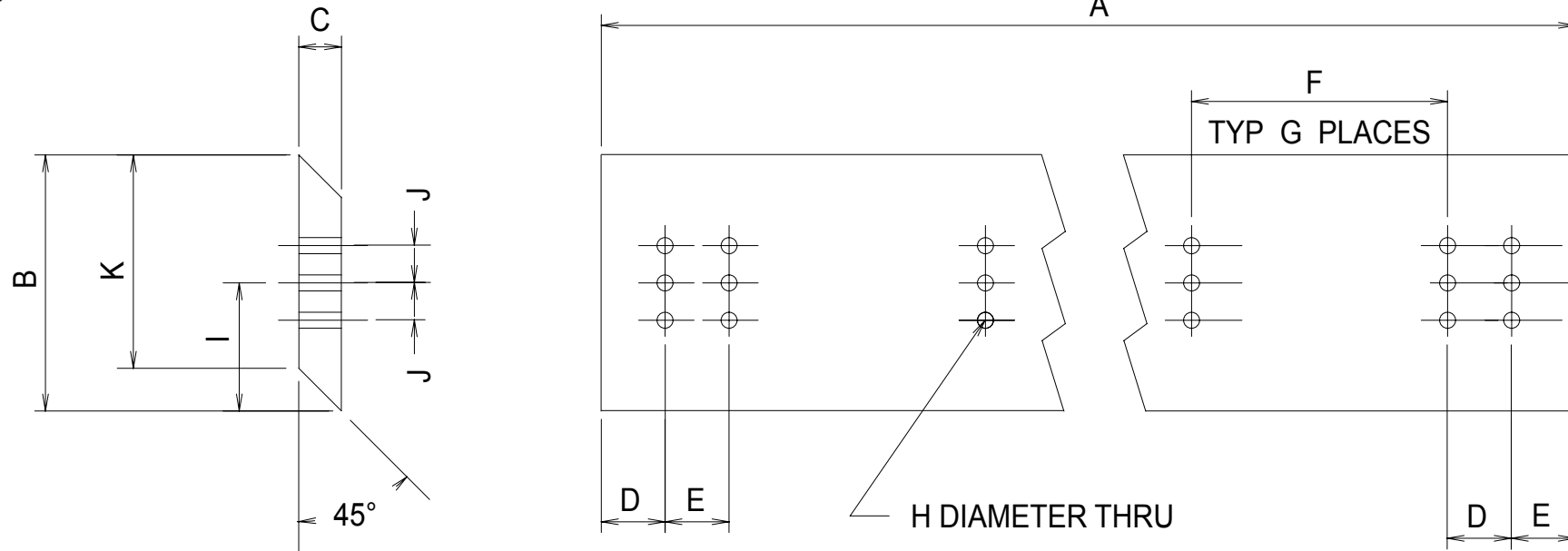




# BEVELED PLOW BLADE



- |                          |              |       |                               |                 |       |
|--------------------------|--------------|-------|-------------------------------|-----------------|-------|
| A - LENGTH               | SPECIFY      | _____ | F - MIDDLE HOLE DISTANCE      | STANDARD 12"    | _____ |
| B - WIDTH                | STANDARD 12" | _____ | G - NUMBER OF SPACES          | SPECIFY         | _____ |
| C - THICKNESS            | STANDARD 2"  | _____ | H - HOLE DIAMETER             | STANDARD 3/4"   | _____ |
| D - FIRST HOLE DISTANCE  | STANDARD 3"  | _____ | I - DISTANCE TO CENTER HOLE   | STANDARD 6"     | _____ |
| E - SECOND HOLE DISTANCE | STANDARD 3"  | _____ | J - DISTANCE FROM CENTER HOLE | STANDARD 1 1/4" | _____ |
|                          |              |       | K - TOP SURFACE DISTANCE      | STANDARD 10"    | _____ |

COLORS - NATURAL, ORANGE, YELLOW, BLUE, RED, PINK

Description	Durometer		Revision /Date		Tolerances Unless Otherwise Specified
	85A				
Material	Job Number	Quote Number		X ± 0.06 0.X ± 0.03 0.XX ± 0.015 0.XXX ± 0.005 Fractions ± 1/64" Angles ± 0° 5' Cavity Surfaces 32 micro inch Mating Pieces RC8 Mark All Mold Pieces With SK Number	
	PT				
Drawing Number	Rev.	Scale	Date		



**Pleiger Plastics Company**

P. O. Box 1271  
 498 Crile Road  
 Washington, PA 15301  
 (724) 228-2244  
 Fax (724) 228-2253